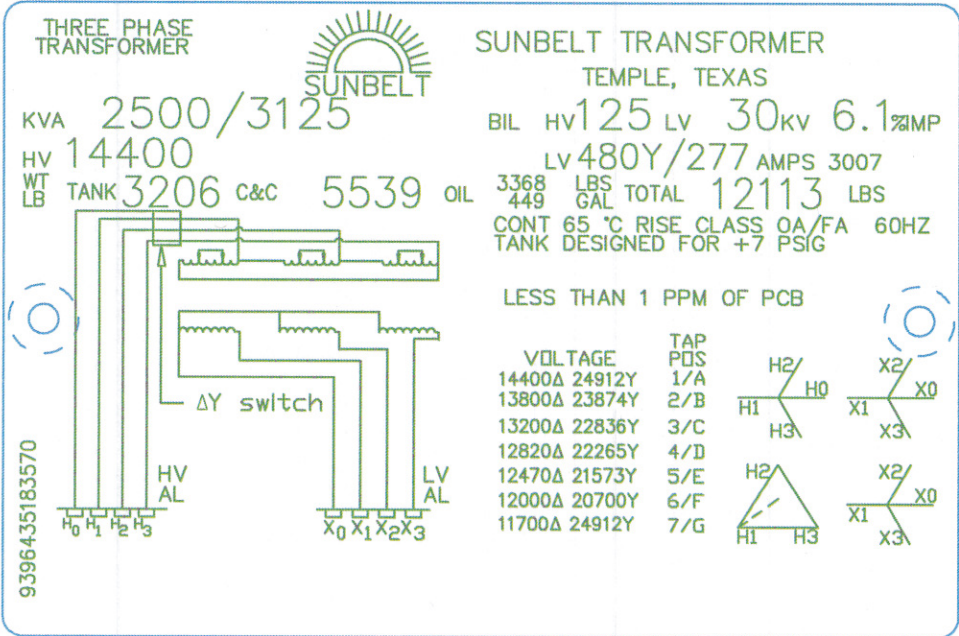


NO. 0061.830022.926



BLACK ANNODIZED ALUMINUM

REV	DATE	REVISION	BY	APP

SUNBELT TRANSFORMER
TEMPLE, TEXAS

NAME: LASER NAME PLATE CC 857

DESCR: RF/TP/ D-Y

ID 3RLH0436 P.N. 0061.830022.926

SCALE 1.000 DWG BY RH CHK BY DATE 2/20/99

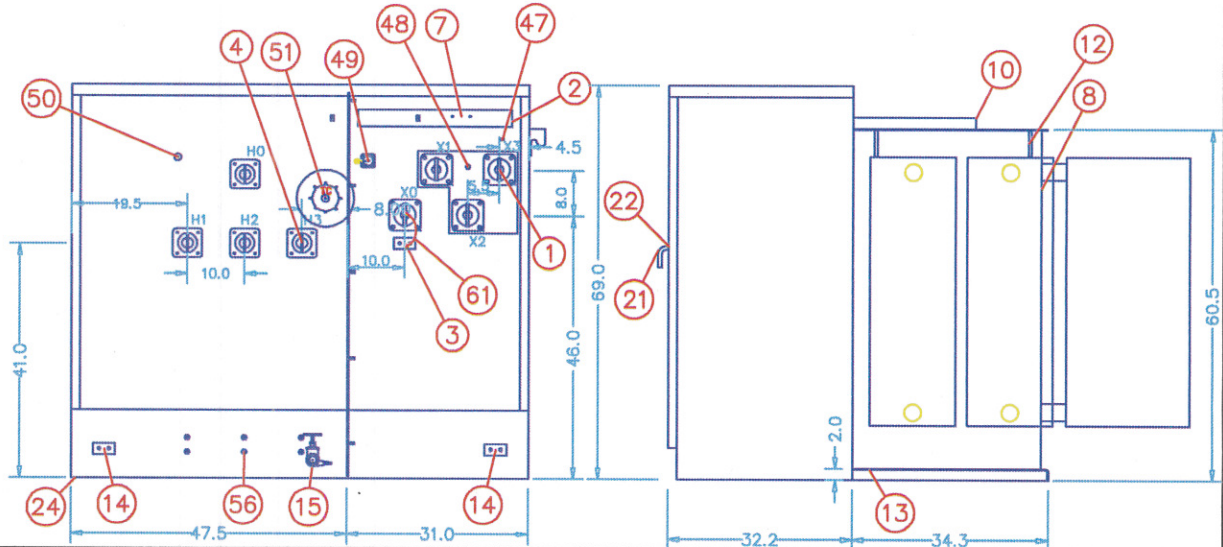
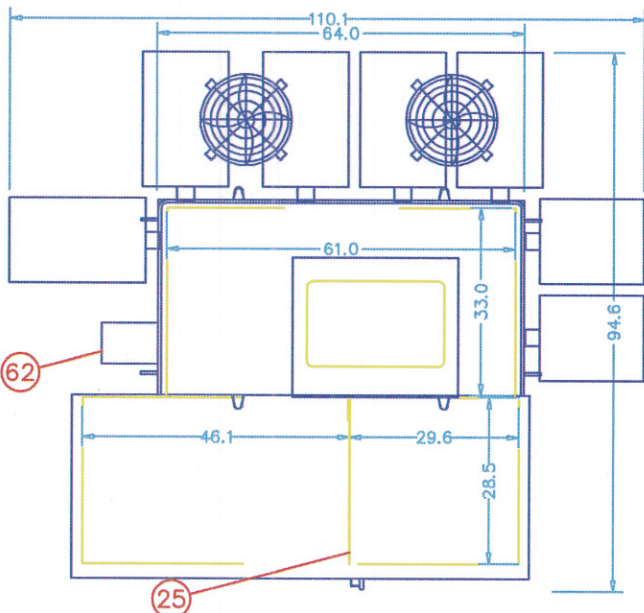
CAT. NO. 9396435183070


3RNS1536

DESCRIPTION	
1	LV BUSH. & 10H SPADE
2	LV BLADE SUPPORT
3	2 HOLE HORIZ NEMA GRD PAD
4	HV BUSH 2 HOLE SPADE
7	NP ON DOOR SER ON TANK
8	TANK
9	COOLING RADIATORS
10	HANDHOLE & SECURITY COVER
12	LIFTING LUGS
13	JACKING PROVISIONS
14	2 HOLE HORIZ NEMA GRD PAD
15	1 IN DRAIN VALVE AND SAMPLER
21	PAD LOCKABLE DOOR HANDLE
22	3 PT LATCH PENTA SEC BOLT
24	12 IN REMOVABLE SILL
25	METAL LV-HV BARRIER
47	PRESS. REL VALVE
48	DIAL THERM W/MAX POINTER
49	2" MAG LL GAUGE: LV COMP
50	OIL LEVEL PLUG
51	TAP CHANGER HANDLE
56	PROVISIONS FOR LTG ARR
61	REMOVABLE GROUND STRAP
62	DELTA/WYE SWITCH

SPECIAL NOTES	
A	
B	
C	
D	
E	

CAT NO	9396435183570
DWG BY	RH
DATE	2/20/99
APP BY	CC, 745



DWG NO. 0073.475032.606			
		SUNBELT TRANSFORMER TEMPLE, TEXAS	
CUSTOMER :			
SPEC.		DATED	
KVA 2500/3125 BIL 125 TAPS SPECIAL Z			
HIGH VOLTAGE 14400Δ/24912Y			
LOW VOLTAGE 480Y/277			
APPROX. CORE AND COIL WEIGHT		5539	
APPROX. TANK AND ACCESS. WEIGHT		3206	
GAL. OF OIL 449		APPROX. WEIGHT 3368	
APPROX. TOTAL WEIGHT		12113	
REV.	DATE	DESCRIPTION	BY APP
A	10/2/02	Corrected radiator scale	
ID 3RLH0415 P.N.0073.475032.606			

9396435183570 - SUNBELT

0.039

93965901Z,CB, 31, 0,H01 , 0, 3, X4

596133,697881,0, 3242,2, 22500

59041976.010

3RNS1515